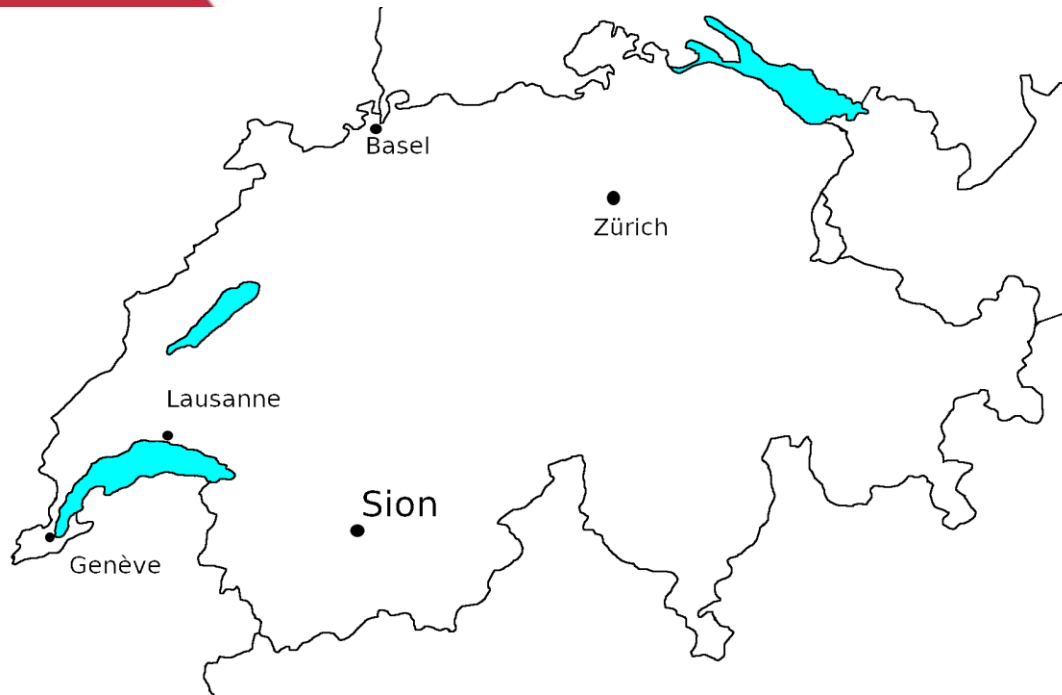


# Sion Time Machine



# What is the Sion Time Machine?

**Sion**

Sion is the capital of Valais, we're lucky to have a well-preserved history, both from an architectural and a documentary point of view. The first signs of population date back to 6200 BC.

**Why create a Sion Time Machine ?**

Sion Time Machine plans to use archeological studies to go back in time way past the medieval era, to prehistoric times.

**What's already done**

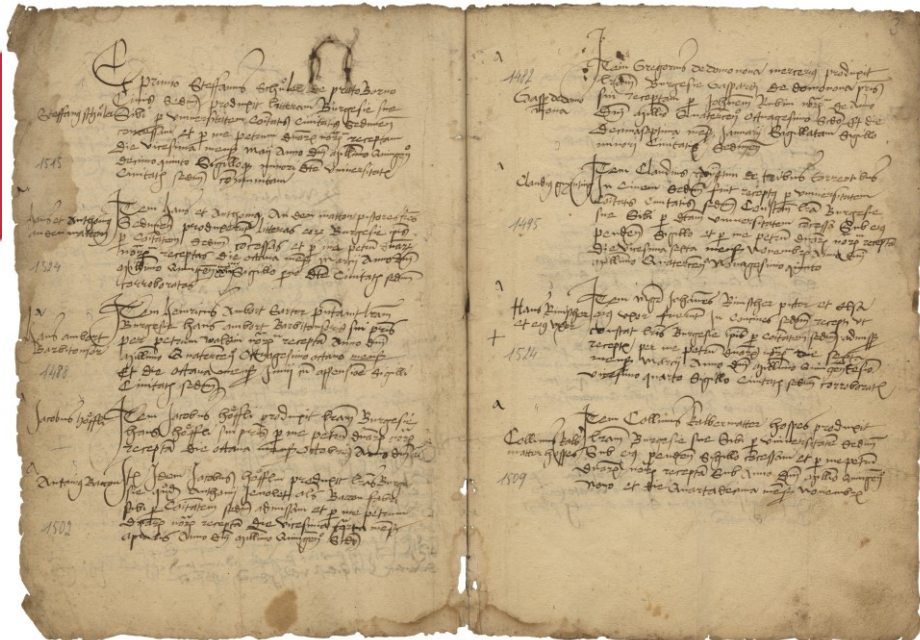
During the last 5 years, the State Archives have started to digitize a lot of big corpora, 19th century census for example.

**What's next ?**

We'll focus on :  
**Indexation**, we don't want to produce data without using it.  
**Sharing** our work with historians, patrons and everyone interested in our history.

- Founded in 2019
- Collaboration between Archives, Médiathèque and Archéologie
- Digitizing large corpora: Recensements, compte de châtelanie, imprimés valaisans...

# Goals



Studying the migration of people who lived in Valais. Where do they come from ? When did they come to Sion ?

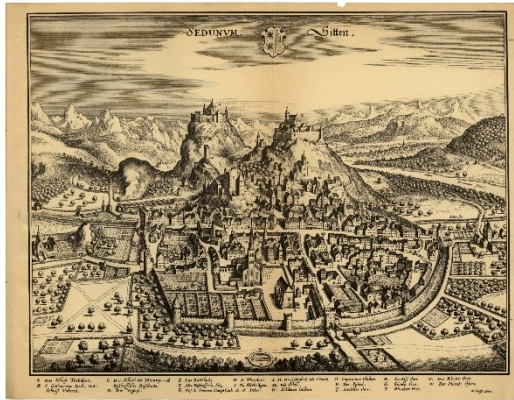
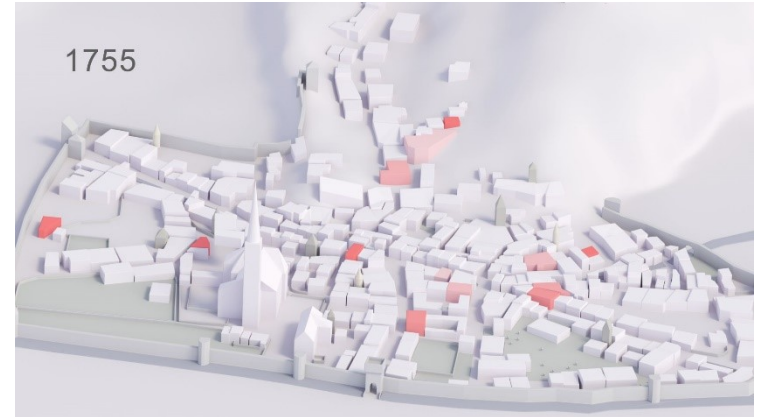
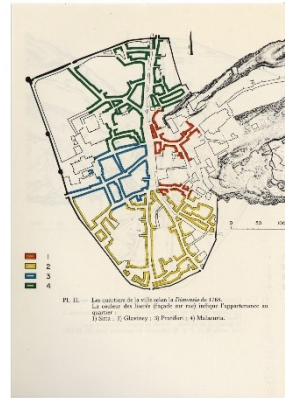
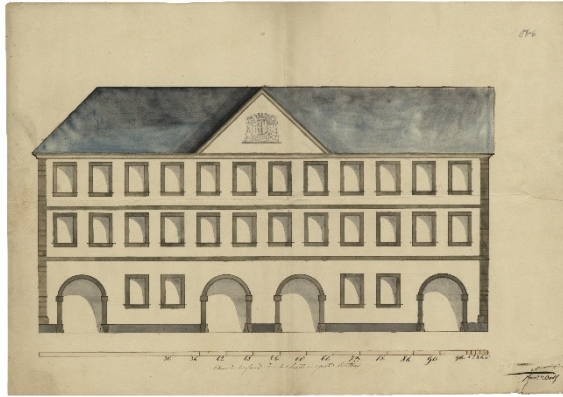
Sion was already inhabited in 5500 BC. We want to include archaeology in our Time Machine.

A large, thick red spiral graphic on the left side of the page, starting from a solid red circle and curving outwards and upwards.

[https://www.youtube.com/watch?v=sWBlq\\_9CynM](https://www.youtube.com/watch?v=sWBlq_9CynM)



# Visualization



## Where to find us?

NOTRE VISION:

# Voyager à travers le temps.

Notre but est de simuler numériquement 10'000 ans d'histoire valaisanne. *Rejoignez-nous!*

Restez informé



<https://www.siontimemachine.ch/>



@siontimemachine



@siontimemachine



@siontimemachine